

Our Valuable Customers :

Lupin Ltd.	Naproad Life Sci. Pvt. Ltd.
RA Chem Pharma Ltd.	SciTech Pvt. Ltd.
Atra Pharma Ltd.	Genom Biotech Pvt. Ltd.
Smurthi Organic Ltd.	Anshul Specialty Molecules Ltd.
Dalas Biotech Ltd.	Divakar Pvt Ltd.
Midas Pharmaceutical Ltd.	Valentine Agro Pvt. Ltd.
Adept Pharma & Bio Science	Ectat Phama & Aerosols Pvt. Ltd.
Excellence Pvt. Ltd. and many more

Product List

Walk-in- Humidity Chamber	Walk-in- Cold Chamber
Walk-in - Incubator	Humidity Chamber
Photostability Chamber	B.O.D. Incubator
Deep Freezer (up to -60°C)	Cold Chamber (2°C to 8°C)
Bacteriological Incubator	Dual Zone Chamber
Laboratory Oven	Hot Air Oven
Vacuum Oven	Constant Temperature Water Bath
Autoclave	Muffle Furnace (up to 115°C)

Our Presence

Ahmedabad	Hyderabad
Aurangabad	Mumbai
Uttaranchal	Nashik
Bangluru	Pune
Chennai	Vadodara
Delhi	Vishakhapatnam
Goa	

Overseas

Bangladesh



AD Pharma Equipment Pvt. Ltd.

Corporate Off.: Shop No. 05, Dream Art, Modern colony,
Saradwadi Road, Tal-Sinnar, Dist- Nashik,
Maharashtra, India -422103

W : www.adigrp.co.in E : sales@adigrp.co.in

M: + 91 96 73 90 55 22



AD Pharma Equipment Pvt. Ltd.

ADVANCED STABILITY SOLUTIONS

Manufacturers of Pharma and Scientific Equipments

www.adigrp.co.in



STABILITY CHAMBER

This is laboratory Humidity / Stability Chamber meant provide a stable Temperature & humidity Condition Environment. The Chambers are designed according to the ICH guidelines and are manufactured to comply requirements in the industries. Stability Testing is an integral part of formulation development. It helps to generate information, which permits well considered proposals to be made for the shelf life of drug substance and products and recommended storage condition.

UNIQUE FEATURES

- Easy to use
- Low Energy Consumption
- Low water consumption Chambers.

SALIENT FEATURES

- Controlling system – PLC.
- 4.3 “HMI with TFT LCD colour Touch Screen.
- PC Communication via Ethernet.
- PLC base auto tune facility.
- PLC Base Safety cut off.
- User based alphanumeric password protection through HMI.
- Uniform Conditions.
- Data Storage and Recording.
- 21 CFR complaint software.
- GSM mobile alert system.
- Hooter System.
- Complete safety and alarm system.
- Door access security system.
- Web based online remote monitoring.
- Standby Refrigeration & Humidity System



Duly electro polished stainless steel wire mesh tray with intervals of ½ “height adjustment for better sample storage. Heavy duty outer insulated door installed with imported hinges and lock for easy operation and inner glass door with latch to observe samples without disturbing the set condition.

TECHNICAL DATA

Standard Model(S) : Inside stainless steel & outside mild steel powder coated.

GMP Model (G) : Inside stainless steel & outside stainless steel matt polish.

Temp. Range / Accu. : 20° C to 60° C / ≤ + /- 0.2° C Uniformity : ≤ + /- 1.0° C

Temp. Range / Accu. : 40 % RH to 90 % RH / ≤ + /- 2.0 % Uniformity : ≤ + /- 3.0° C

Models	Capacity	Internal size in	External size in MM	Tray Qty	Tray size in MM	Total
AD/SC-15	150	500Wx400Dx750H	625Wx1100Dx1650H	2	425Wx395Dx30H	3KW
AD/SC-25	250	600Wx400Dx1050	725Wx1100Dx1650H	2	525Wx395Dx30H	3KW
AD/SC-40	400	700Wx500Dx1150H	825Wx1200Dx1750H	3	625Wx495Dx30H	3.5KW
AD/SC-50	500	700Wx600Dx1200	825Wx1300Dx1800H	3	625Wx595Dx30H	3.5KW
AD/SC-60	600	700Wx600Dx1450	825Wx1300Dx2050H	3	625Wx595Dx30H	3.5KW
AD/SC-80	800	700Wx800Dx1450	825Wx1500Dx2050H	4	625Wx795Dx30H	3.5KW
AD/SC-100	1000	800Wx800Dx2050	925Wx1500Dx2200H	4	725Wx795Dx30H	3.5KW

Low Rh Chambers are also available for conditions of 20° C/ 40°C % Rh, 40 C/ 25% Rh & 30°C/ 35 % Rh

Models	Material of Construction	
	Interior	Exterior
AD1	S.S. 304 Mirror Finish	G.I. Powder Coated
AD2	S.S. 304 Mirror Finish	S.S. 304 Matt Finish
AD3	S.S. 316 Mirror Finish	S.S. 304 Matt Finish

FOR ENQUIRIES

AD Pharma Equipment Pvt. Ltd.

Corporate Off.: Shop No. 05, Dream Art, Modern colony, Saradwadi Road, Tal-Sinnar,
Dist. Nashik-422103, Maharashtra, India.

(T) +91 9673905522 / 9673895522 / 9673915522

(E) sales@adigrp.co.in

Or visit us at (W) www.adigrp.co.in

Note: The dimensions / specification may be changed without notice. Photographs are for Reference purpose only.



WALK IN STABILITY CHAMBER

This is laboratory Walk in Humidity / Stability Chamber meant provide a stable Temperature & humidity Condition Environment. The Chambers are designed according to the ICH guidelines and are manufactured to comply requirements in the industries. Stability Testing is an integral part of formulation development. It helps to generate information, which permits well considered proposals to be made for the shelf life of drug substance and products and recommended storage condition.

UNIQUE FEATURES

- Easy to use
- Low Energy Consumption
- Low water consumption Chambers.
- User based alphanumeric password protection through HMI.
- Uniform Conditions.
- Data Storage and Recording.
- 21 CFR complaint software.
- GSM mobile alert system.
- Hooter System.
- Complete safety and alarm system.
- Door access security system.
- Web based online remote monitoring.
- Work on 3 Phase 50 Hz

SALIENT FEATURES

- Controlling system – PLC.
- 7 “HMI with TFT LCD colour Touch Screen.
- PC Communication via Ethernet.
- PLC base auto tune facility.
- PLC Base Safety cut off.



TECHNICAL DATA

Standard Model(S) : Inside stainless steel & outside mild steel powder coated.

GMP Model (G) : Inside stainless steel & outside stainless steel matt polish.

Temp. Range / Accu. : 20° C to 60° C / $\leq + / - 0.2^{\circ} \text{C}$ Uniformity : $\leq + / - 1.0^{\circ} \text{C}$

Temp. Range / Accu. : 40 % RH to 90 % RH / $\leq + / - 2.0 \%$ Uniformity : $\leq + / - 3.0^{\circ} \text{C}$

Models	Capacity	Internal size in MM	External size in MM	Rack Qty	Tray Qty	Tray size in MM	Total
AD/WSC-600	6000	2000Wx1500Dx2000H	2160Wx2100Dx2200H	4	20	625Wx625Dx30H	7KW
AD/WSC-800	8000	2000Wx2000Dx2000H	2160Wx2600Dx2200H	4	20	850Wx625Dx30H	7KW
AD/WSC-1000	10000	2000Wx2500Dx2000H	2160Wx3100Dx2200H	6	30	725Wx625Dx30H	8KW
AD/WSC-1200	12000	2000Wx3000Dx2000H	2160Wx3600Dx2200H	4	20	900Wx625Dx30H	8KW
AD/WSC-1600	16000	2000Wx4000Dx2000H	2160Wx4600Dx2200H	8	40	900Wx625Dx30H	9KW

Note : Other Sizes are available on Request.

Models	Material of Construction	
	Interior	Exterior
AD1	S.S. 304 Mirror Finish	G.I. Powder Coated
AD2	S.S. 304 Mirror Finish	S.S. 304 Matt Finish
AD3	S.S. 316 Mirror Finish	S.S. 304 Matt Finish

FOR ENQUIRIES

AD Pharma Equipment Pvt. Ltd.

Corporate Off.: Shop No. 05, Dream Art, Modern colony, Saradwadi Road, Tal-Sinnar,

Dist. Nashik-422103, Maharashtra, India.

(T) +91 9673905522 / 9673895522 / 9673915522

(E) sales@adigrp.co.in

Or visit us at (W) www.adigrp.co.in

Note: The dimensions / specification may be changed without notice. Photographs are for Reference purpose only.



BOD INCUBATOR

This is laboratory incubator meant for general purpose with high degree accuracy, having constant and generative incubation conditions. Incubator can be used for providing heated conditions, for exposures necessary for general incubation, bacteriological growth, and cell on tissue culture, pathology labs & other applications with economy & are simple in operations which make it easy to handle &use.

UNIQUE FEATURES

- Easy to use
- High Uniformity
- High Temperature Accuracy
- Low Energy Consumption

SALIENT FEATURES

- Controlling system – PLC.
- 7 “HMI with TFT LCD colour Touch Screen.
- PC Communication via Ethernet.
- PLC base auto tune facility.
- PLC Base Safety cut off.
- User based alphanumeric password protection through HMI.
- Uniform Conditions.
- Data Storage and Recording.
- 21 CFR complaint software.
- GSM mobile alert system.
- Hooter System.
- Complete safety and alarm system.
- Door access security system.
- Web based online remote monitoring.



Duly electro polished stainless steel wire mesh tray with intervals of ½ “height adjustment for better sample storage. Heavy duty outer insulated door installed with imported hinges and lock for easy operation and inner glass door with latch to observe samples without disturbing the set condition.

TECHNICAL DATA

Standard Model(S): Inside stainless steel & outside mild steel powder coated.

GMP Model (G) : Inside stainless steel & outside stainless steel matt polish.

Temp. Range : 5° C above ambient to 60° C.

Accuracy : ≤ + /- 0.2° C

Uniformity : ≤ + /- 1.0° C

Models	Capacity	Internal size in MM	External size in MM	Tray Qty	Tray size in MM	Total Load
AD/BO-15	150	500Wx400Dx750H	625Wx860Dx1350H	2	425Wx395Dx30H	1.5KW
AD/BO-25	250	600Wx400Dx1050H	725Wx860Dx1650H	2	525Wx395Dx30H	15KW
AD/BO-40	400	700Wx500Dx1150H	825Wx960Dx1750H	3	625Wx495Dx30H	2KW
AD/BO-50	500	700Wx600Dx1200H	825Wx1060Dx1800H	3	625Wx595Dx30H	2KW
AD/BO-60	600	700Wx600Dx1450H	825Wx1060Dx2050H	3	625Wx595Dx30H	2KW
AD/BO-80	800	700Wx800Dx1450H	825Wx1260Dx2050H	4	625Wx795Dx30H	2KW
AD/BO-100	1000	800Wx800Dx1600H	925Wx1260Dx2200H	4	725Wx795Dx30H	2K

Models	Material of Construction	
	Interior	Exterior
AD1	S.S. 304 Mirror Finish	G.I. Powder Coated
AD2	S.S. 304 Mirror Finish	S.S. 304 Matt Finish
AD3	S.S. 316 Mirror Finish	S.S. 304 Matt Finish

FOR ENQUIRIES

AD Pharma Equipment Pvt. Ltd.

Corporate Off.: Shop No. 05, Dream Art, Modern colony, Saradwadi Road, Tal-Sinnar,

Dist. Nashik-422103, Maharashtra, India.

(T) +91 9673905522 / 9673895522 / 9673915522

(E) sales@adigrp.co.in

Or visit us at (W) www.adigrp.co.in

Note: The dimensions / specification may be changed without notice. Photographs are for Reference purpose only.



PHOTO STABILITY CHAMBER

This is photo stability chamber meant for Photo stability chamber should be specifically designed to perform UV and visual light exposure to samples as per standard Guidelines. This unit should have light and temperature control through an easy to use colour touch screen interface. The chamber should have uniform light distribution and high intensity levels to allow quick response for forced degradation testing. The functions of the chamber should be fully controlled via PLC with features such as alarms for aging lamps, auto – switch off of UV lights upon door opening etc. it should also have specular reflective surfaces to provide uniform UVA and VIS light reflection and to maintain proper spectral power distribution.

UNIQUE FEATURES

- Easy to use
- High Uniformity
- High Temperature Accuracy
- Low Energy Consumption

SALIENT FEATURES

- Controlling system – PLC.
- 7 “HMI with TFT LCD colour Touch Screen.
- PC Communication via Ethernet.
- PLC base auto tune facility.
- PLC Base Safety cut off.
- User based alphanumeric password protection through HMI.
- Uniform Conditions.
- Data Storage and Recording.
- 21 CFR complaint software.
- GSM mobile alert system.
- Hooter System.
- Complete safety and alarm system.
- Door access security system.
- Web based online remote monitoring.



Duly electro polished stainless steel wire mesh tray with intervals of ½ “height adjustment for better sample storage. Heavy duty outer insulated door installed with imported hinges and lock for easy operation and inner glass door with latch to observe samples without disturbing the set condition.

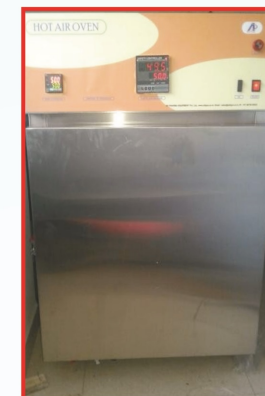
Other Products



Auto Clave



Photo Stability



Hot Air Oven



Stability Chamber



Bacteriological Incubator



Vacuum Oven



Hooter System



Muffle Furnace



Water Bath

FOR ENQUIRIES

AD Pharma Equipment Pvt. Ltd.

Corporate Off.: Shop No. 05, Dream Art, Modern colony, Saradwadi Road, Tal-Sinnar,

Dist. Nashik-422103, Maharashtra, India.

(T) +91 9673905522 / 9673895522 / 9673915522

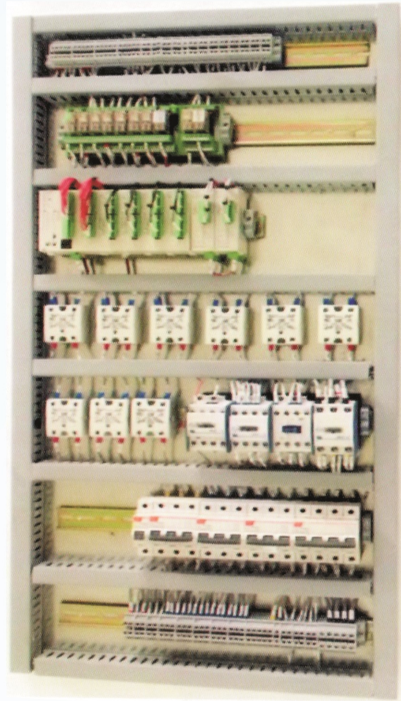
(E) sales@adigrp.co.in

Or visit us at (W) www.adigrp.co.in

Note: The dimensions / specification may be changed without notice. Photographs are for Reference purpose only.



PLC BASE CONTROL SYSTEMS



- Controlling system – PLC.
- PC Communication via Ethernet.
- PLC base auto tune facility.
- User based alphanumeric Password Protection through HMI
- Stand alone 7.0" HMI with TFT LCD Colour touch Screen
- PLC Base Safety cut off.
- PLC Based SMS Alert.



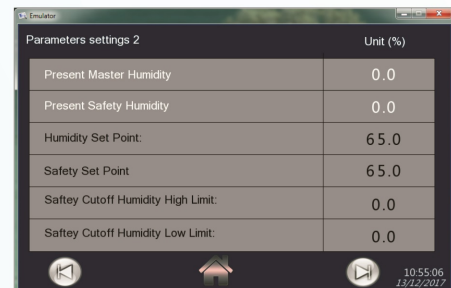
Default Display



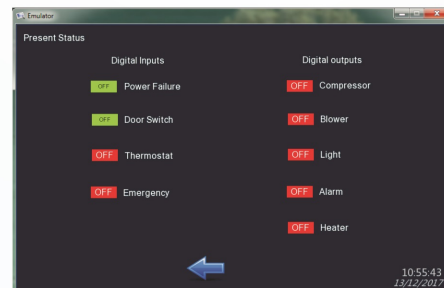
Alarm Log



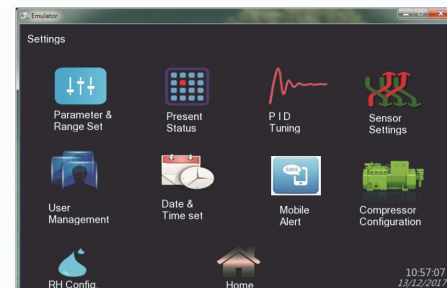
Operator Log



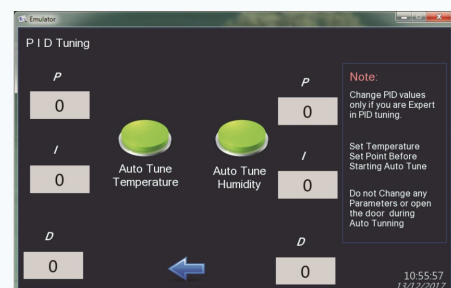
Safety Cutoff



Active Status



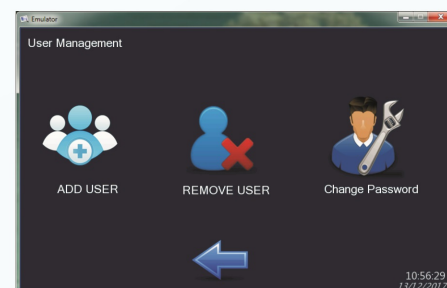
Setting



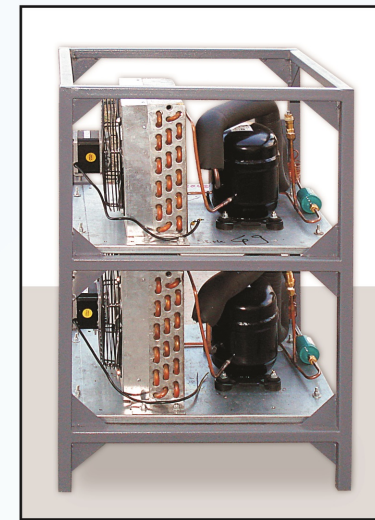
Auto Tune



Compressor Setting



User Management



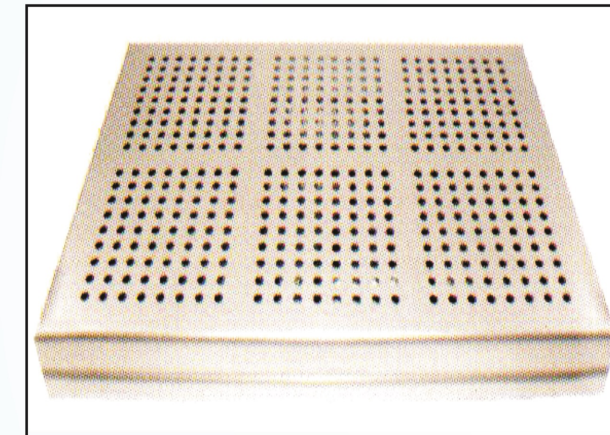
Standby Refrigeration



Racks



Wire Mesh Tray



Perforated Tray



Standby Steam Tank

FOR ENQUIRIES

AD Pharma Equipment Pvt. Ltd.

Corporate Off.: Shop No. 05, Dream Art, Modern colony, Saradwadi Road, Tal-Sinnar,

Dist. Nashik-422103, Maharashtra, India.

(T) +91 9673905522 / 9673895522 / 9673915522

(E) sales@adigrp.co.in

Or visit us at (W) www.adigrp.co.in

Note: The dimensions / specification may be changed without notice. Photographs are for Reference purpose only.



SSDAS SOFTWARE

WEB Based **SSDAS V1.0** Software is developed as a complete solution for online monitoring and recording data to meet 21 CFR part 11 Compliance.

Key Features

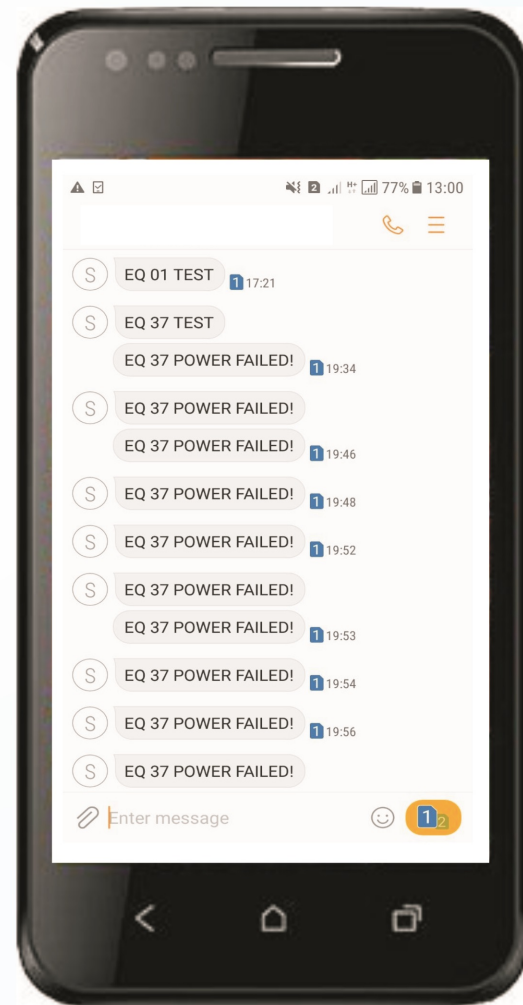
- Real Time Reading (Master Temp & Humidity, Scanner, Alarm & Event Dashboard)
- User Based alphanumeric & special characters password.
- User Group (Created by Admin only)
- PLC Base SMS Alert & Software base Report generator
- First Time Login mandatory password change
- Account block after five wrong password attempts
- Password Reset from Admin
- Data Backup and Restoration
- Selectable Password Expiry
- Database Backup Reminder
- Company Logo on all Reports

Tabular Reports (PDF)

- Master Offline Analysis
- Scanner Offline Analysis
- MKT Analysis Report
- Event Report
- Alarm Report
- Audit Report
- All Temp. And RH lower and higher cut off event report
- User Login Report
- Parameter setting change Audit report (e.g. Set point, PF)

Graphical Report (PDF)

- Master Temperature
- Master Humidity
- Scanner Offline Temperature
- Scanner Offline Humidity



SMS Alert



AD Pharma Equipment Pvt. Ltd.

Event And Alarm Report

For The Period 29-Apr-2016 14:10:22 TO 30-Apr-2016 15:10:22

Date/Time	Chamber	Event	Remarks
29-Apr-2016 17:29:22	APEPL/QC/01	Raw Power OFF	
29-Apr-2016 17:30:30	APEPL/QC/01	Raw Power ON	
29-Apr-2016 17:30:32	APEPL/QC/01	Raw Power OFF	
29-Apr-2016 17:30:32	APEPL/QC/01	Raw Power ON	
29-Apr-2016 17:31:04	APEPL/QC/01	Steam Generator-A Faulty	
29-Apr-2016 17:31:04	APEPL/QC/01	High Temperature Thermostate ON	
29-Apr-2016 17:31:04	APEPL/QC/01	Door open	
29-Apr-2016 17:31:04	APEPL/QC/01	Raw Power OFF	
29-Apr-2016 17:31:04	APEPL/QC/01	Low Temperature Thermostate ON	
29-Apr-2016 17:31:04	APEPL/QC/01	Steam Generator-B Faulty	

12-12-2017 03:13:23 PM
CHECKED BY:

Username = admin
APPROVED BY:



AD Pharma Equipment Pvt. Ltd.

For The Period 29-Apr-2016 14:10:22 TO 30-Apr-2016 15:10:22



12-12-2017 03:13:23 PM
CHECKED BY:

Username = admin
APPROVED BY:

FOR ENQUIRIES

AD Pharma Equipment Pvt. Ltd.

Corporate Off.: Shop No. 05, Dream Art, Modern colony, Saradwadi Road, Tal-Sinnar,
Dist. Nashik-422103, Maharashtra, India.

(T) +91 9673905522 / 9673895522 / 9673915522

(E) sales@adigrp.co.in

Or visit us at (W) www.adigrp.co.in

Note: The dimensions / specification may be changed without notice. Photographs are for Reference purpose only.



AD Pharma Equipment Pvt. Ltd.

Master Offline Analysis

Equipment ID-Name APEPL/QC/01 - HUMIDITY CHAMBER

For The Period 29-Apr-2016 14:10:22 TO 30-Apr-2016 15:10:22

Temperature in °C, Relative Humidity in %RH, Time in HH:MM:SS	
Temperature Acceptance Limit: +/- 2.0	Humidity Acceptance Limit: +/- 5.0
Max Temperature: 25.1	Max Humidity: 60.5
Min Temperature: 24.9	Min Humidity: 59.5

Date/Time	Temperature		Humidity	
	PV	SV	PV	SV
29-Apr-2016 15:36:54	25.0	25.0	60.0	60.0
29-Apr-2016 16:36:54	25.0	25.0	60.1	60.0
29-Apr-2016 18:31:34	25.0	25.0	60.3	60.0
29-Apr-2016 19:31:34	24.9	25.0	59.8	60.0
29-Apr-2016 20:31:32	25.0	25.0	59.5	60.0
29-Apr-2016 21:31:32	24.9	25.0	60.2	60.0
29-Apr-2016 22:31:30	25.0	25.0	60.1	60.0
29-Apr-2016 23:31:30	25.0	25.0	59.9	60.0
30-Apr-2016 00:31:28	25.0	25.0	60.5	60.0
30-Apr-2016 01:31:26	25.0	25.0	60.0	60.0
30-Apr-2016 02:31:26	25.0	25.0	60.2	60.0
30-Apr-2016 03:31:24	25.0	25.0	59.6	60.0
30-Apr-2016 04:31:24	25.0	25.0	59.7	60.0
30-Apr-2016 05:31:22	25.0	25.0	60.3	60.0
30-Apr-2016 06:31:22	25.1	25.0	60.0	60.0
30-Apr-2016 07:31:20	25.0	25.0	59.8	60.0
30-Apr-2016 08:31:20	25.0	25.0	59.7	60.0
30-Apr-2016 09:31:18	25.0	25.0	60.0	60.0
30-Apr-2016 10:31:18	25.0	25.0	60.1	60.0
30-Apr-2016 11:31:16	25.1	25.0	60.4	60.0
30-Apr-2016 12:31:16	25.0	25.0	59.9	60.0
30-Apr-2016 13:31:14	25.0	25.0	59.8	60.0
30-Apr-2016 14:31:14	25.0	25.0	59.8	60.0

12-12-2017 03:13:23 PM
CHECKED BY:

Username = admin
APPROVED BY:

About Us

We started our operation in a small way in the year 2013. We are known for prompt, economical & reliable, manufacture of Equipments, Annual Maintains Contract (AMC), Calibration, Validation services catering mainly to Pharmaceutical & Electronics segment.

Keeping in mind our motto of achieving continually better level of customer satisfaction, **AD Pharma Equipment Pvt. Ltd.** maintains a very professional approach in its working & complies with applicable National / International codes &Standards, upgrades the knowledge & skills of its personal through training to ensure continuous human resources development .We committed to Quality of Services for regulated markets.

We believes in maintaining its high standards of services & looks forward to continually improving & providing total customer satisfaction through feedback from its client.

Vision

Our vision is to be the leading good services of environmental testing equipment.

Mission

Provide reliable and high quality service to the client in most efficient and cost effective manner.

Commitment

Ensure Proper maintenance & service of products through expatiation in Electronics, Electricals & also Mechanical engineering with 24x7 services backup.

SERVICES for All kinds of Chambers.

Annual Maintenance Contracts - Comprehensive and Semi-Comprehensive

Up-gradation of PLC Control Systems and Components

Up-gradation of Software

Capacity and Resource Planning

Power consumption Studies for maximizing Efficiency

Calibration and Validation

Customization

Documentation

SOP's operation, calibration, validation, & maintenance.

We are also committed to our customers with:

Quality of Services

Timely service

As we have grown over the years, the prime commitment of our experienced team of engineers has been, and continues to be “Excellence”

Excellence in engineering knowledge and

Excellence in the service support.